

ACTUATION SYSTEMS FOR KITCHENS

TiMOTION actuator systems bring ergonomic solutions to modern kitchens

www.timotion.com

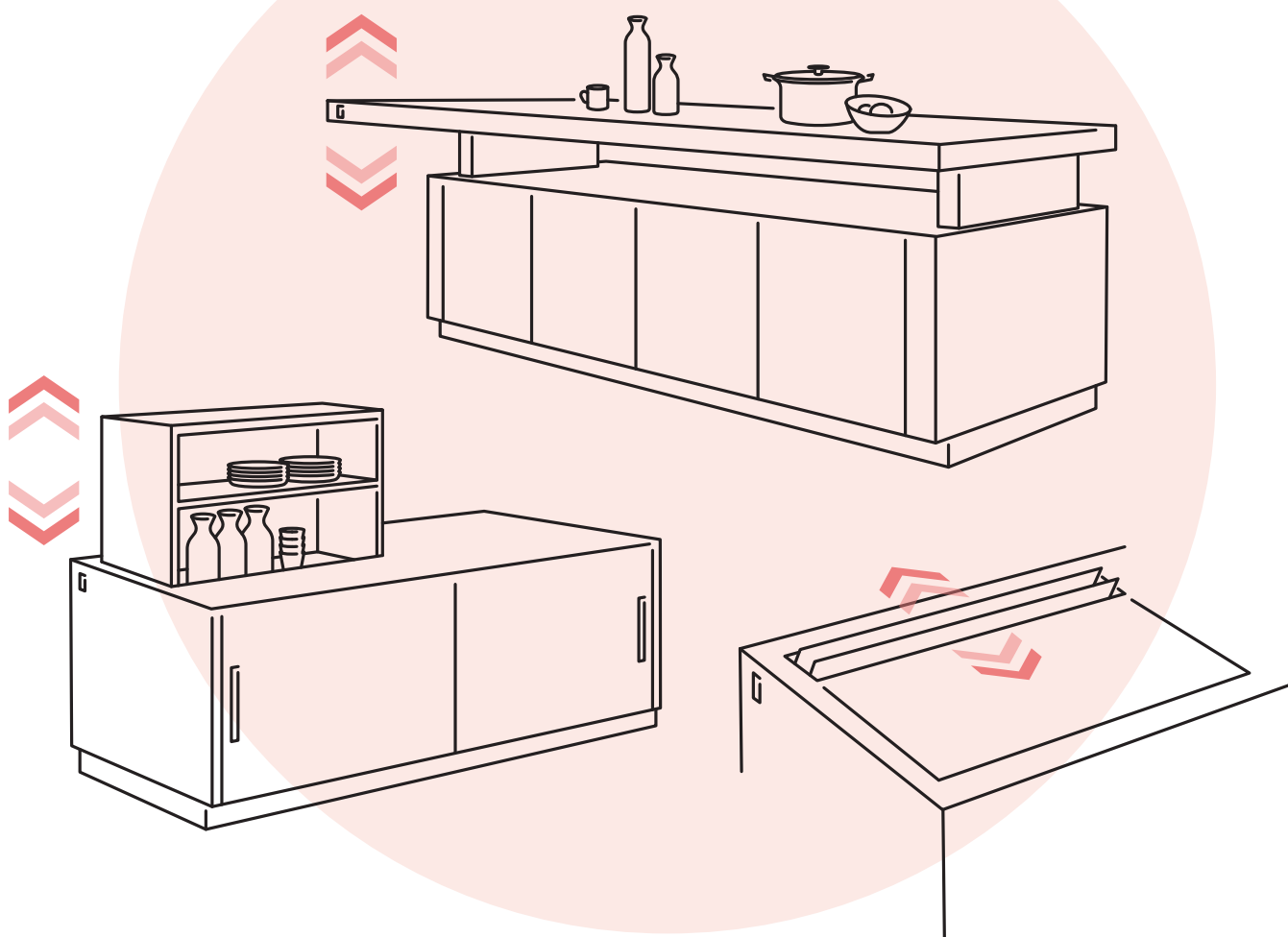


Timotion Creates Ergonomic Actuator Systems to Promote Healthier Lifestyles and Adjustability in Modern Kitchens

Technology makes life easier and more pleasant. With the assistance of actuated motion solutions, modern kitchens become not only an ergonomic utopia for preparing food, but also for spending quality time with family and friends in complete comfort. At TiMOTION, we devote ourselves in providing flexible solutions and offering our expertise in actuated solutions for both kitchen designers and manufacturers.

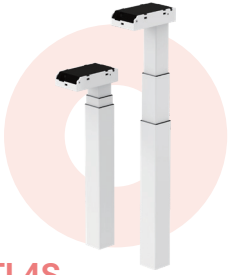
Height adjustable solutions can be applied to kitchen worktops, enabling the users to tailor their workspace to their individual needs accommodating the most ergonomically efficient position.

TiMOTION products can also be of service when it comes to space-saving kitchen designs, facilitating applications such as hidden rangehoods and concealed cabinetry to achieve versatile functionality with limited space.



Suitable applications include, but are not limited to:

- Ergonomic Kitchen island/worktops
- Rangehood/Cabinet concealment
- Automated rangehood flap
- Height adjustable rangehood
- Adjustable backsplash



TL4S

Max. load

600N (push)

Max. speed at no load

55mm/s

Retracted length

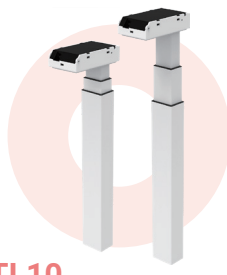
Standard: 590 / 560 (M) / 520 (S) mm;
for shoes: 610 / 580 (M) / 540 (S) mm

Dimension of outer tube

70*70mm square

Stroke

650 / 660 (M, S) mm



TL10

Max. load

800N (push)

Max. speed at no load

58mm/s

Retracted length

590 / 560 (M) mm

Dimension of outer tube

80*60mm rectangular

Stroke

650 / 660 (M) mm



TL12

Max. load

800N (push)

Max. speed at no load

48mm/s

Retracted length

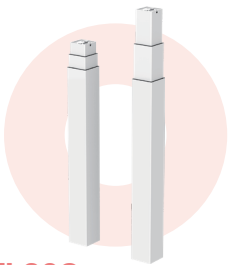
590 / 560 (M) / 700 (XL) mm

Dimension of outer tube

80*60mm rectangular

Stroke

650 / 660 (M) / 950 (XL) mm



TL20S

Max. load

700N (push)

Max. speed at no load

46mm/s

Retracted length

Standard: 590 / 560 (M) / 520 (S) mm;
for shoes: 610 / 580 (M) / 540 (S) mm

Dimension of outer tube

70*70mm square

Stroke

650 / 660 (M, S) mm



TL35S

Max. load

700N (push)

Max. speed at no load

46mm/s

Retracted length

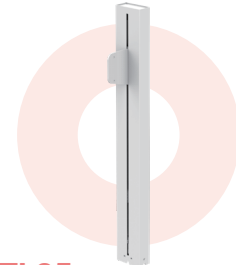
Standard: 590 / 560 (M) / 520 (S) mm;
for shoes: 610 / 580 (M) / 540 (S) mm

Dimension of outer tube

97*67mm rectangular

Stroke

650 / 660 (M, S) mm



TL25

Max. load

1,000N (push)

Max. speed at no load

75mm/s

Retracted length

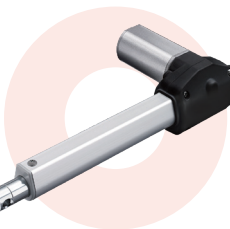
860mm

Dimension of outer tube

50*100mm rectangular

Stroke

500mm



TA9

Max. load

2,500N (push) / 1,000N (pull)

Max. speed at max. load

5.1mm/s

Max. speed at no load

58.3mm/s

Retracted length

≥ Stroke + 140mm



TA26

Max. load

4,000N (push) / 2,000N (pull)

Max. speed at max. load

6.1mm/s

Max. speed at no load

24mm/s

Retracted length

≥ Stroke + 120mm



TA32

Max. load

500N (push)

Max. speed at max. load

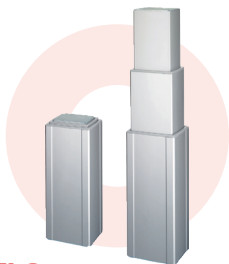
4.8mm/s

Max. speed at no load

16mm/s

Retracted length

≥ 143mm



TL3

Max. load

4,000N (push)

Self-locking force

4,000N

Max. dynamic bending moment

1,000Nm

Max. speed at max. load

13.7mm/s

Max. speed at no load

39mm/s

Retracted length

$\geq \text{Stroke}/2 + 150\text{mm}$



TL18

Max. load

4,500N (push)

Self-locking force

4,500N

Max. dynamic bending moment

250Nm

Max. speed at max. load

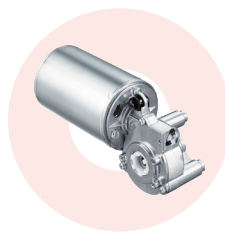
6.6mm/s

Max. speed at no load

45mm/s

Retracted length

$\geq \text{Stroke} + 147\text{mm}$



TGM2

Max. rated torque

18.3Nm

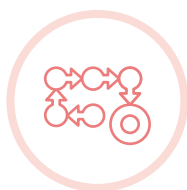
Max. speed at max. load

51RPM ($\pm 5\%$)

Max. speed at no load

108RPM ($\pm 5\%$)

TiMOTION Cares About What You Need



Vertical Integration



Customization



Global Service Office

Taiwan & China

+886 2 2219 6633

sales.tw@timotion.com

Europe

+33 (0)1 74 82 50 51

sales.eu@timotion.com

USA

(704) 708 6924

sales.us@timotion.com

Australia

+61 3 8725 0331

sales.tw@timotion.com

Japan

+81 6 6713 1188

sales.jp@timotion.com

Korea

+82 31 745 1060

sales@timotion.co.kr